



Creating value through Research & Development

Professor Outi Vaarala, MD, PhD
Senior Vice President, Research &
Development

Disclaimer

This presentation contains forward-looking statements which involve risks and uncertainty factors. These statements are not based on historical facts but relate to the Company's future activities and performance. They include statements about future strategies and anticipated benefits of these strategies.

These statements are subject to risks and uncertainties. Actual results may differ substantially from those stated in any forward-looking statement. This is due to a number of factors, including the possibility that Orion may decide not to implement these strategies and the possibility that the anticipated benefits of implemented strategies are not achieved. Orion assumes no obligation to update or revise any information included in this presentation.

SVP R&D Orion from June 2020



MD, PhD (immunology), University of Helsinki

Professor of Immunology, LiU, Sweden, 2001

Research Professor, THL, 2004-2014

EMA Permanent External Expert 2005-2014

VP Research, AZ/Medimmune 2014-2019

VP Oncology Research Orion 2019-2020

Agenda



1. RD renewal



2. Research focus areas



3. Clinical pipeline



Renewal of Orion R&D

1. Re-newal of Orion R&D - starting point

STRENGTHS



Hormonal cancer drug discovery



Parkinson's disease drug discovery



ALS Ph3 program in neurological rare diseases area

Investments 2017-2020



- Large molecules
- Digital medicine / AI



Orion has a solid financial basis to support RD

AREAS TO DEVELOP



Build a balanced pipeline with continuous feed of clinical projects

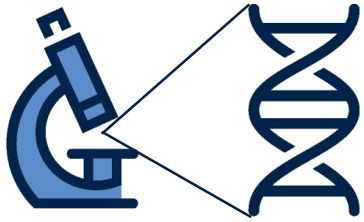


Increase success rate and speed



Science & Data driven organisation

- Focused strategy in Oncology and Neurological Diseases



We follow the patient's journey and transform science into life-changing medicines



Success

Focus

Speed

1) nmHSPC = non-metastatic hormone-sensitive prostate cancer 2) nmCRPC = non-metastatic castration-resistant prostate cancer
3) mHSPC = metastatic hormone-sensitive prostate cancer 4) mCRPC = metastatic castration-resistant prostate cancer

Key changes in Orion R&D

1 Research strengthened to drive target identification and validation

2 Resources re-allocated for the prioritised projects



3 Focused clinical trials on biomarker selected patients

4 Support pipeline with in-licensing and partnering

5 Boosting generics development

6 Microbiome research in Animal Health



Research focus areas

Research Areas in Orion's R&D



Neurological Disorders

- Pain
- Neurodegenerative Proteinopathy
- Neurological Genetic Disorders

Oncology Research

- Immuno-oncology
- Cancer Genomics and Signalling
- Antibody Drug Conjugates

Discovery Sciences

- New Therapies
- Microbiome
- Discovery Technologies

Neurological Disorders Research

Research Areas



Pain - Ion channels and neuro-immune interaction



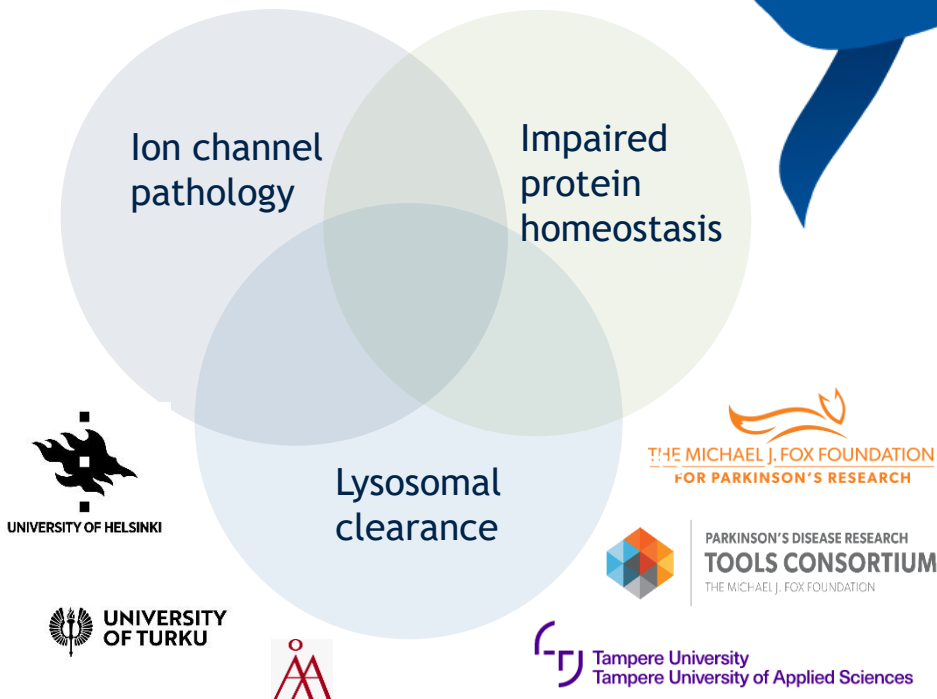
Neurodegenerative Proteinopathy - Pathological protein aggregation and clearance



Neurological Genetic Disorders - Rare lysosomal storage disorders and epilepsies



AsahiKASEI



Oncology Research

Research Areas

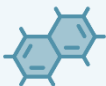


Immuno-Oncology

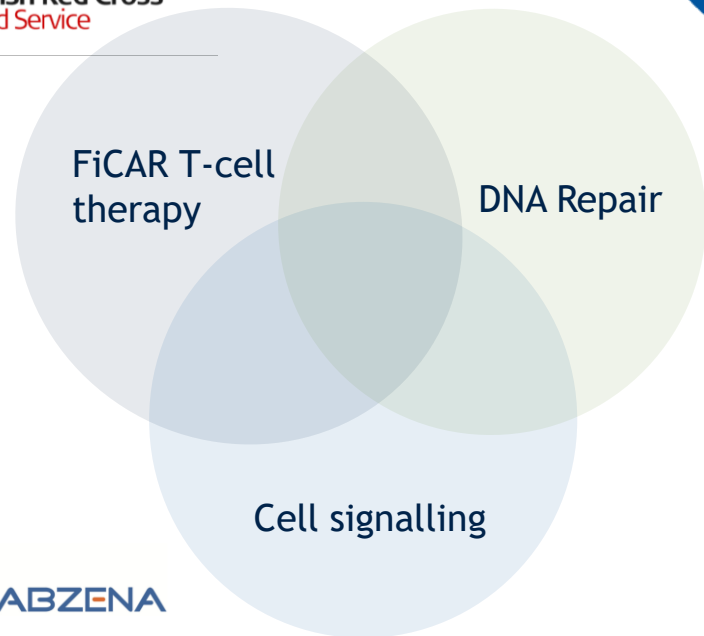
- FiCAR T-cell therapy
- 2nd generation immune-checkpoint inhibitors



Cancer genomics and Cell signalling



Antibody drug conjugates



Discovery Sciences

Research Areas



New Therapies

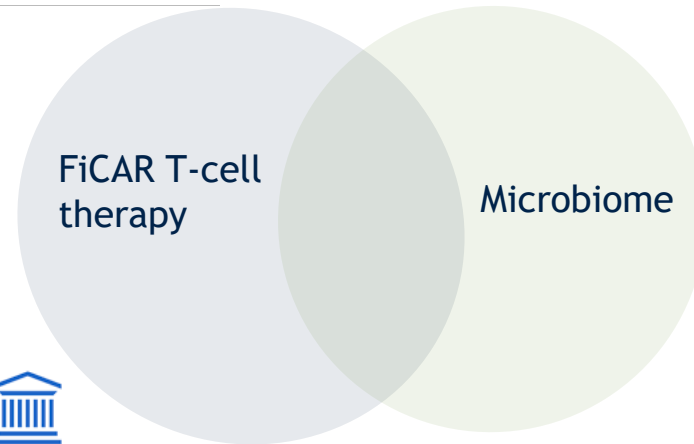
- Cell and Gene Therapy



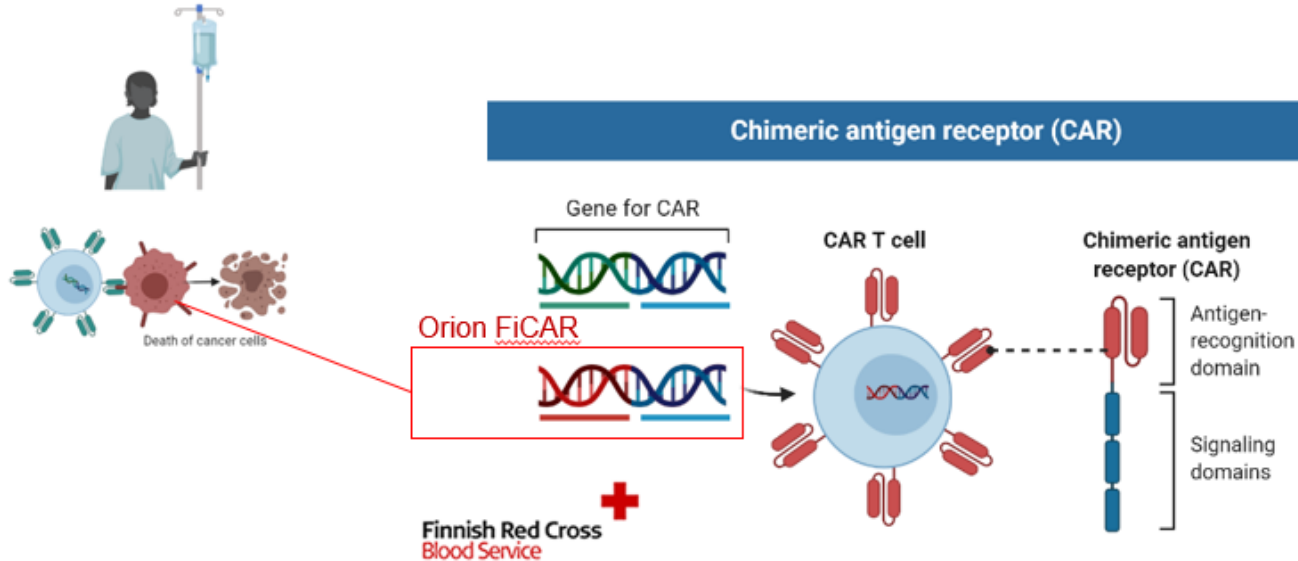
Microbiome



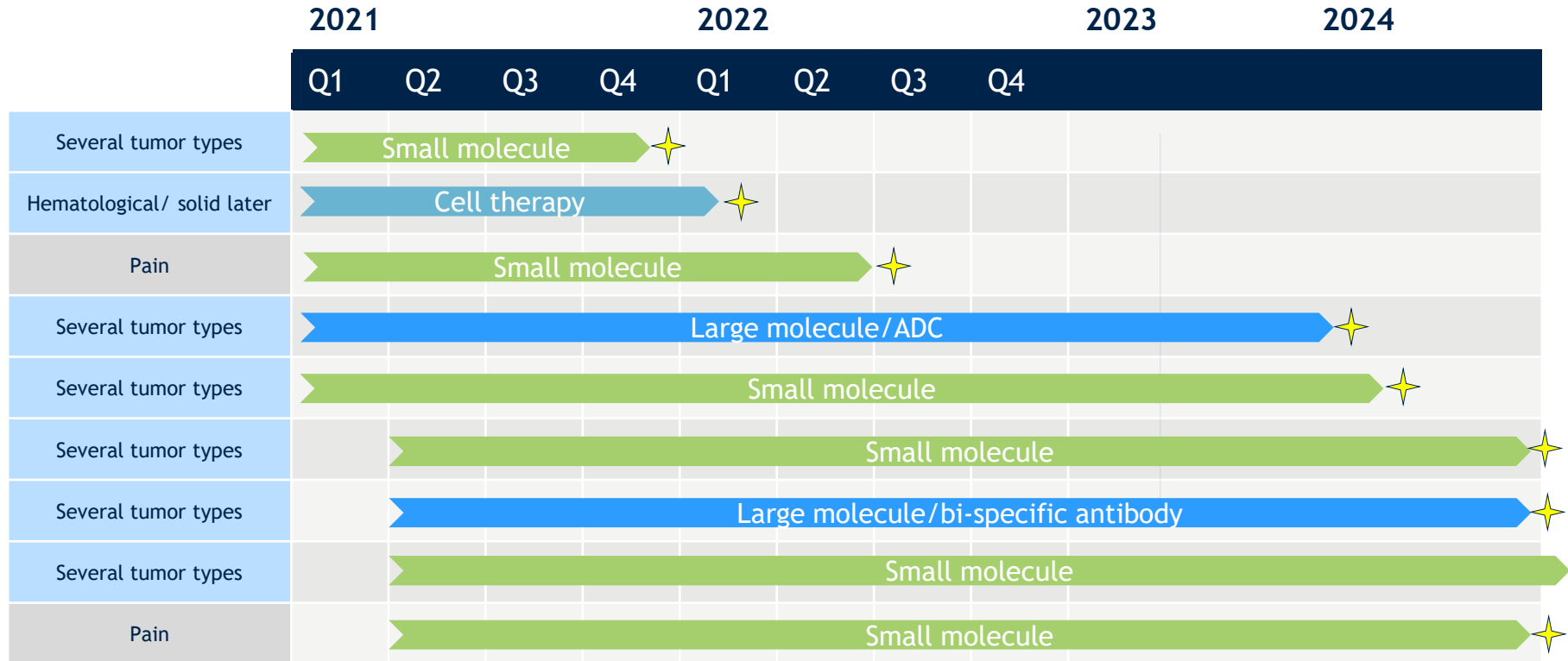
Discovery Technologies



We have initiated CAR T-cell therapy research project in collaboration with The Finnish Red Cross



R&D research pipeline in May 2021

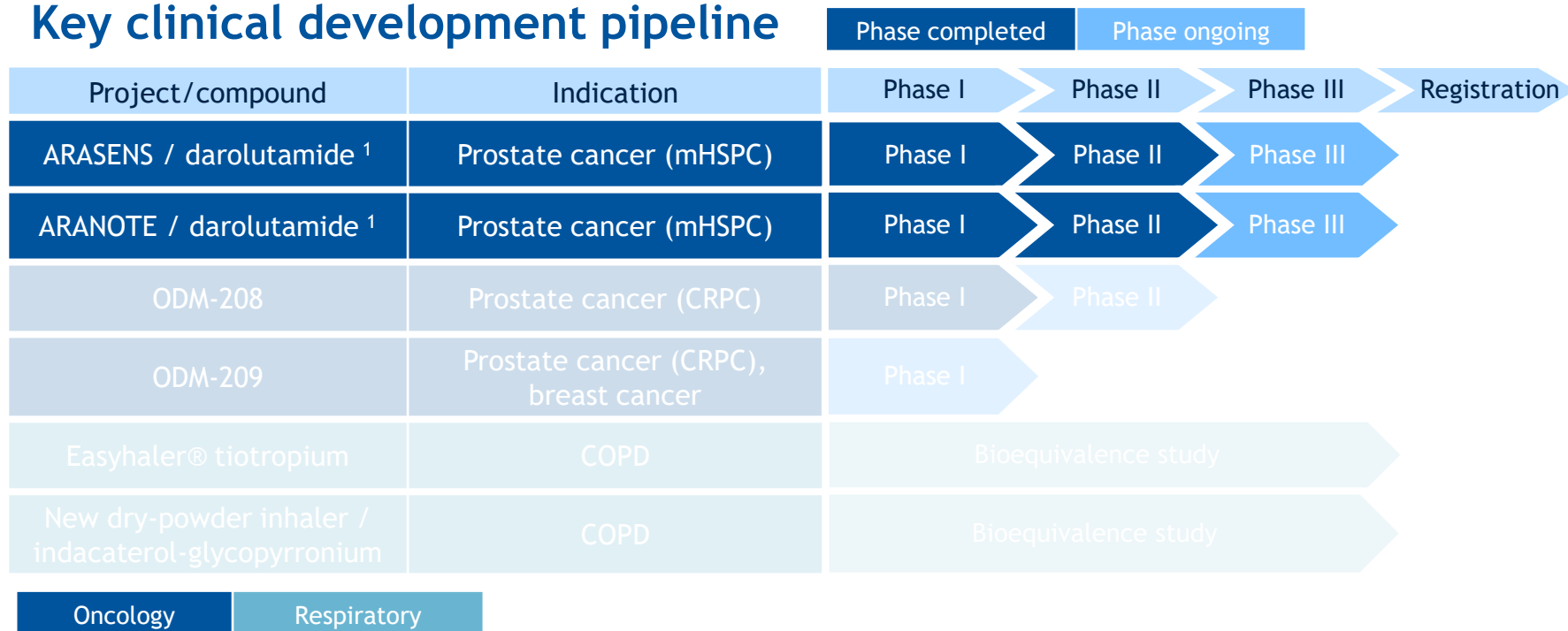


Possible candidate selection ★



Key clinical pipeline


Key clinical development pipeline



¹⁾ In collaboration with Bayer

Nubeqa®: Clinical trials ongoing to expand indication to patients with metastatic hormone sensitive prostate cancer

We follow the Patient's Journey

Prostate Cancer	Non-metastatic			Metastatic		
	nmHSPC ¹		nmCRPC ²	mHSPC ³		mCRPC ⁴
	Adjuvant			Chemo Combo	No Chemo Combo	
 NUBEQA® (darolutamide) <small>ORION</small>	DASL-HiCaP		approved	ARASENS	ARANOTE	
enzalutamide			approved		approved	approved
apalutamide			approved		approved	
abiraterone acetate					approved	approved

1) nmHSPC = non-metastatic hormone-sensitive prostate cancer 2) nmCRPC = non-metastatic castration-resistant prostate cancer
 3) mHSPC = metastatic hormone-sensitive prostate cancer 4) mCRPC = metastatic castration-resistant prostate cancer

 = approved / completed or enrolling

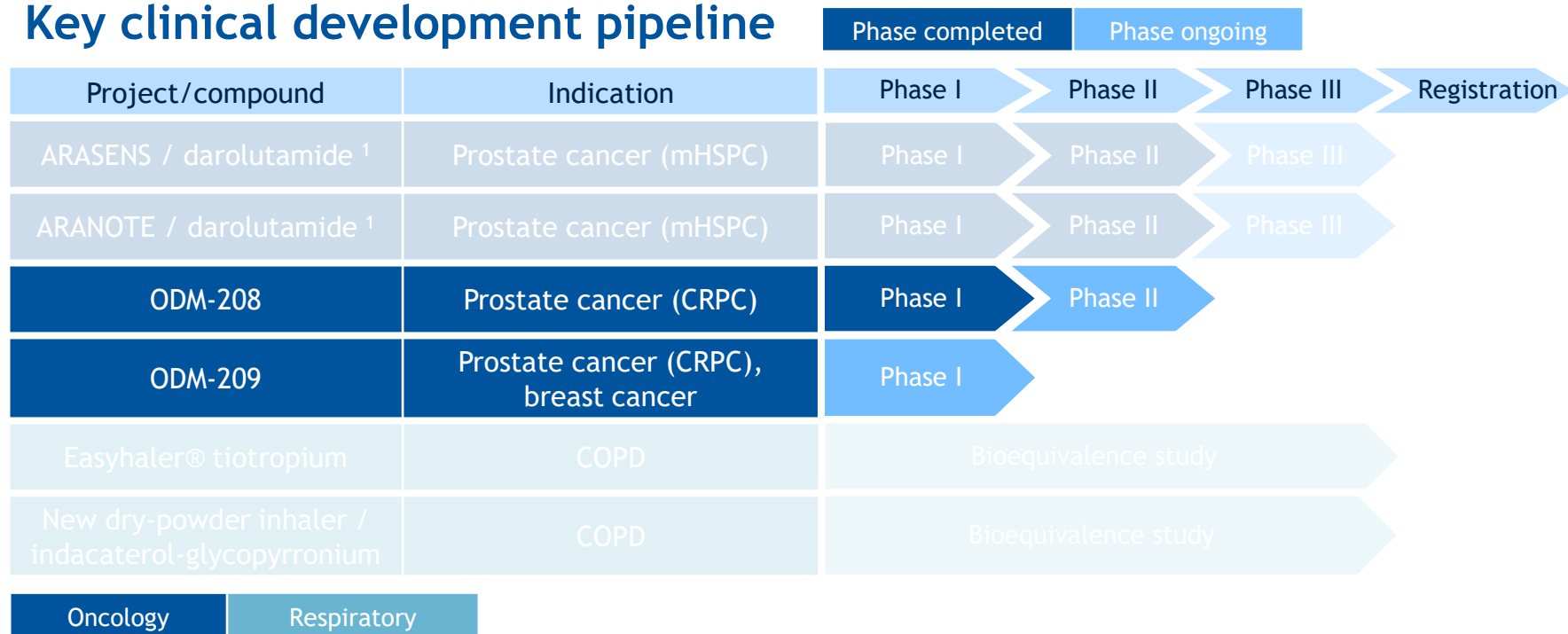
ARASENS & ARANOTE trials aiming to expand the indication of darolutamide to metastatic hormone-sensitive prostate cancer



Trial on-going	Target Patients	Treatment Combo	Primary End-point	Present Status
ARASENS	mHSPC	Darolutamide + ADT + Docetaxel	Overall survival	Fully recruited
ARANOTE	mHSPC	Darolutamide + ADT	Radiological progression-free survival	Recruitment started

We follow the Patient's Journey

Key clinical development pipeline




¹⁾ In collaboration with Bayer

CYP11A1 inhibitors (ODM-208 & ODM-209) to treat the patients with metastatic castration-resistant prostate cancer (mCRPC)

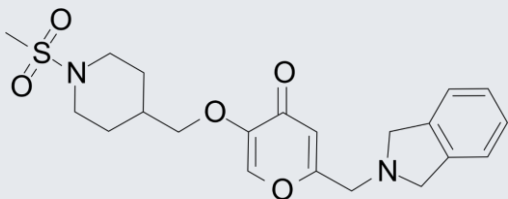


We follow the Patient's Journey

	Non-metastatic		Metastatic		
Prostate Cancer	nmHSPC ¹		nmCRPC ²	mHSPC ³	
	Adjuvant			Chemo Combo	No Chemo Combo
 NUBEQA [®] <small>(darolutamide) 200 mg</small>	DASL-HiCaP		approved	ARASENS	ARANOTE
					ODM-208/ ODM-209

ODM-208 (& ODM-209): CYP11A1 inhibitor to treat the patients with metastatic castration-resistant prostate cancer (mCRPC)

ODM-208



- First-in-class oral molecule to inhibit the synthesis of all steroid hormones and precursors, which could mediate androgen receptor signalling and tumor growth

Target Patients



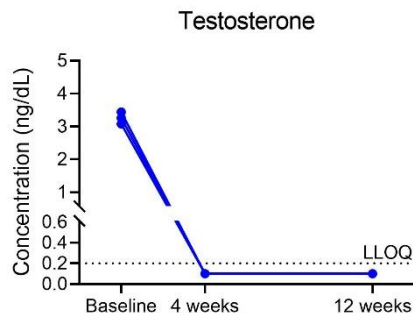
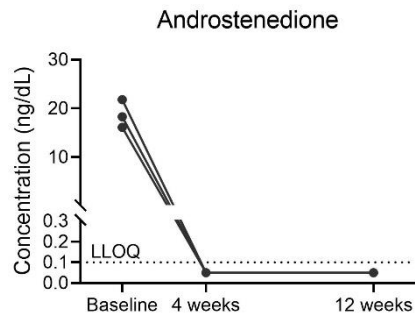
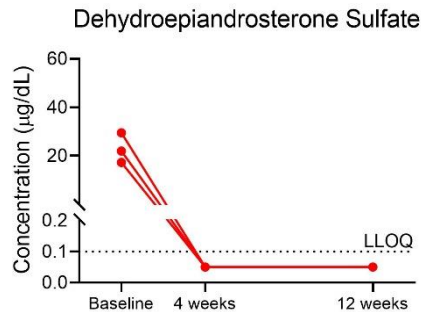
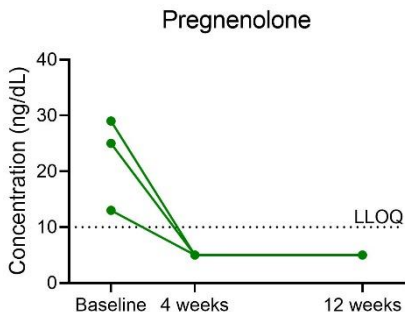
Target patients with prostate cancer that has become resistant to the standard hormonal treatments.



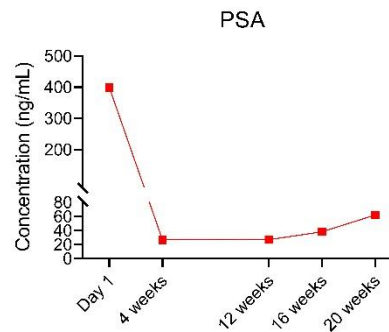
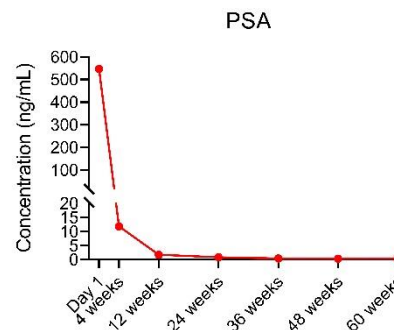
Potential indications beyond prostate cancer :
breast cancer, endometrial
uterus cancer

ODM-208 reduces the serum steroids below the detection limit in the patients with mCRPC and ongoing ADT

Steroid decrease in three patients dosed in CYPIDES Ph1



PSA decrease in two responders



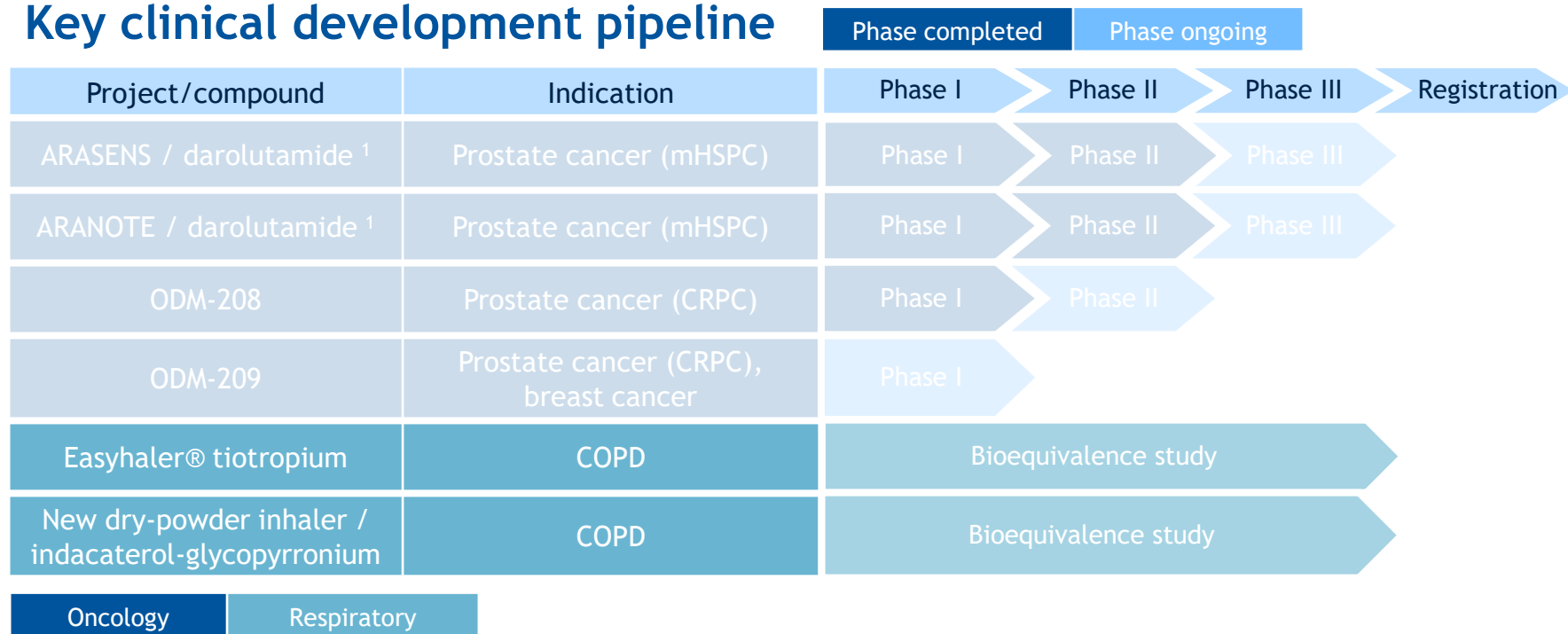
CYPIDES and STESIDES studies to select the best molecule for the patients with metastatic castrate-resistant prostate cancer (progressed during one or more novel hormonal therapy and chemotherapy)



Trial on-going	Target Patients	Treatment	Primary end-point	Present Status
CYPIDES	mCRPC	ODM-208 + glucocorticoid and mineralocorticoid replacement therapy	Safety Efficacy (steroids + PSA decrease)	Ph2 on-going
STESIDES	mCRPC Breast Cancer	ODM-209 + glucocorticoid and mineralocorticoid replacement therapy	Safety Efficacy (steroids + PSA decrease)	Ph1 on-going

We follow the Patient's Journey

Key clinical development pipeline



¹⁾ In collaboration with Bayer

Patient centric portfolio for Asthma & COPD



Current portfolio

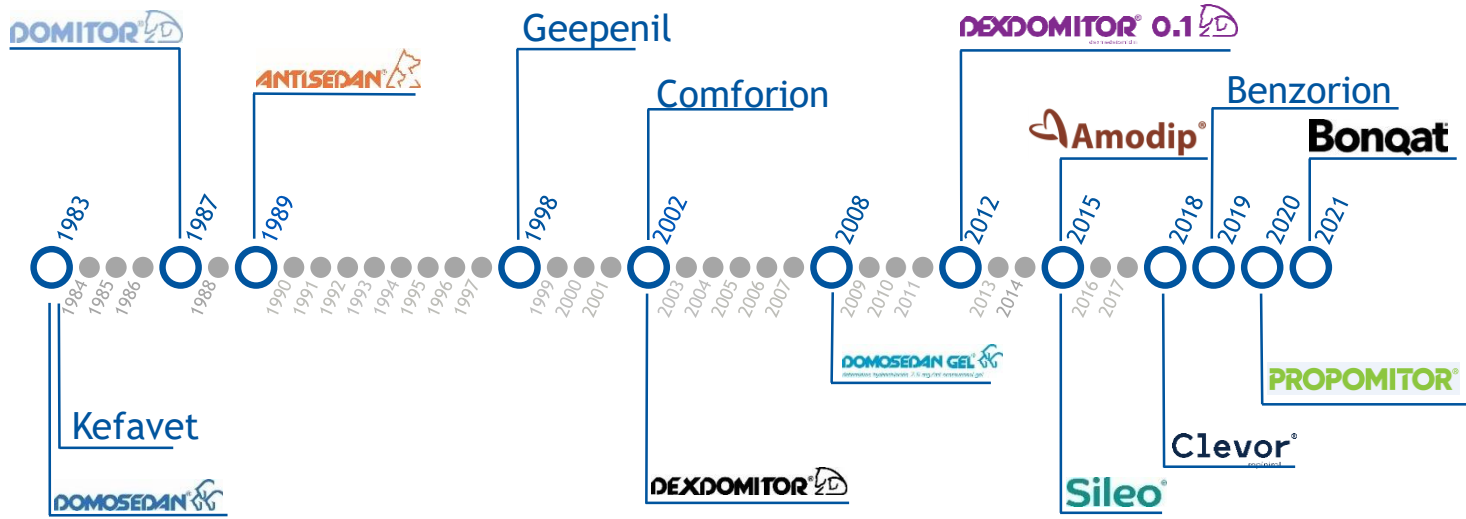


Clinical development projects aiming to expand the offering



Indacaterol-glycopyrronium
New dry-powder inhaler

Main Orion Animal Health Marketing Authorisations



In registration phase

A novel alpha-2 adrenoceptor agonist, alleviates acute anxiety and fear associated with travel and separation anxiety in dogs

Highlight from research

Several activities in microbiome field - different species such as chicken, dogs, cats and swine



Orion Corporation Capital Markets Day